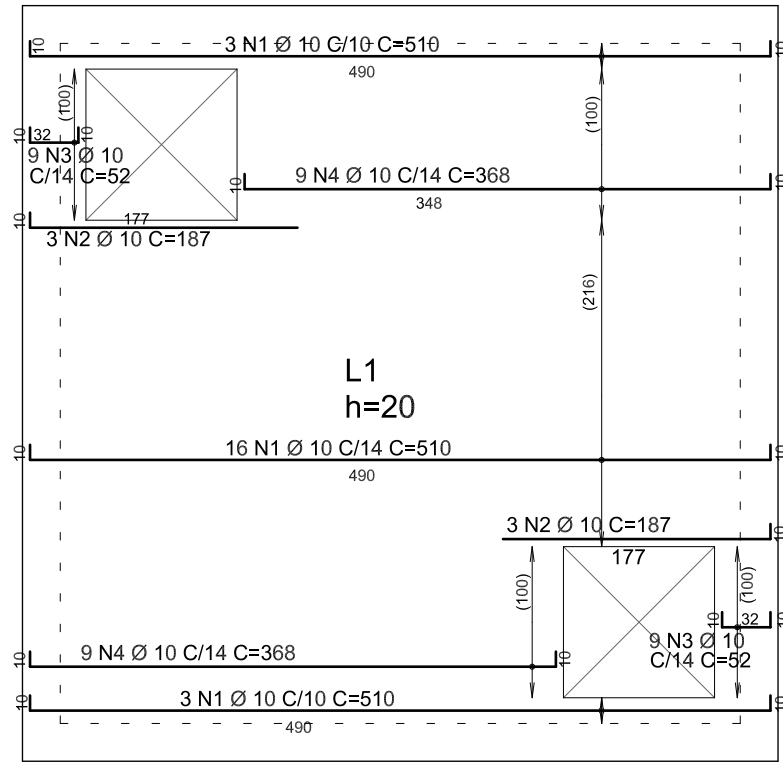
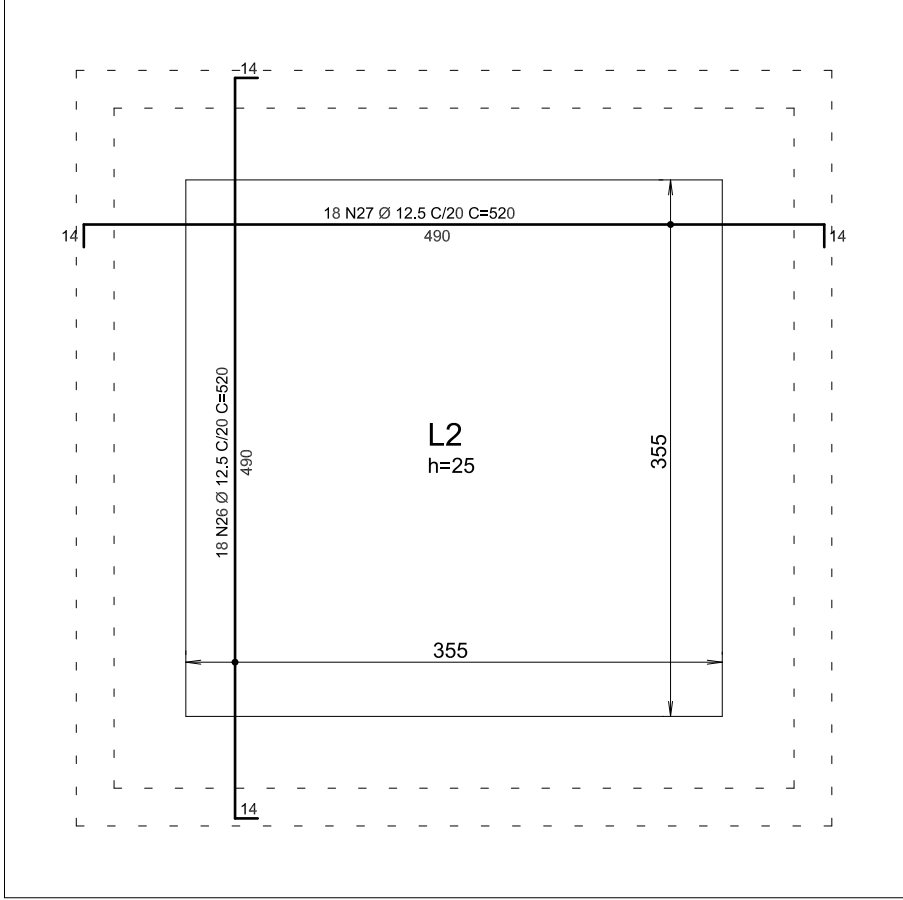


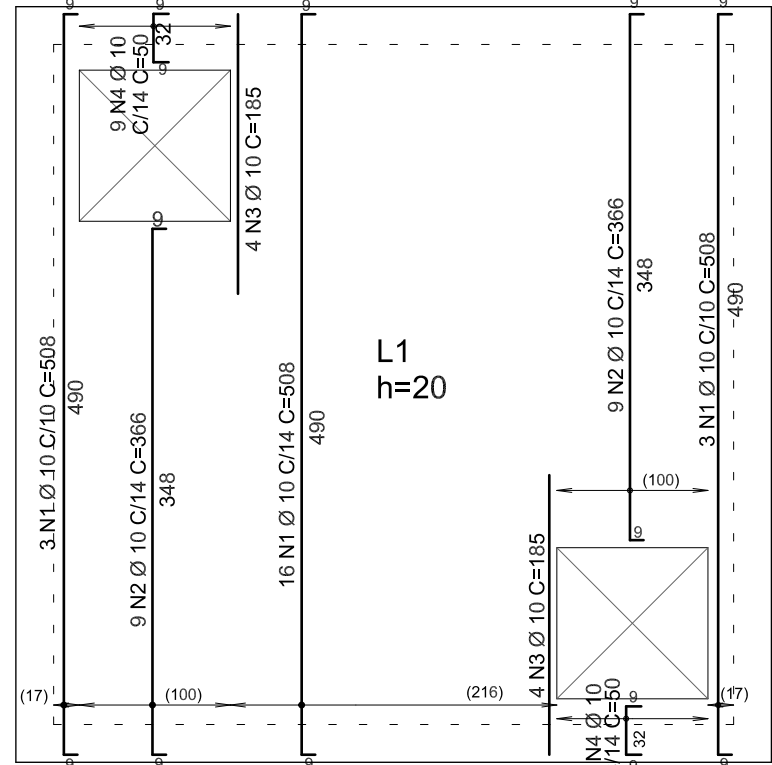
ARMADURA NEGATIVA HORIZONTAL
ESC.: 1/50



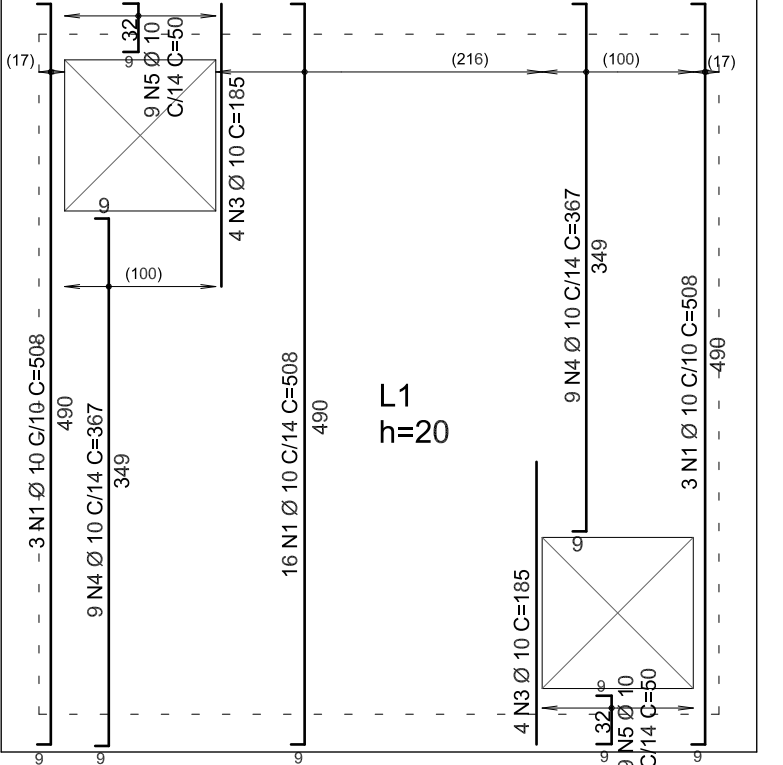
ARMADURA POSITIVA HORIZONTAL
ESC.: 1/50



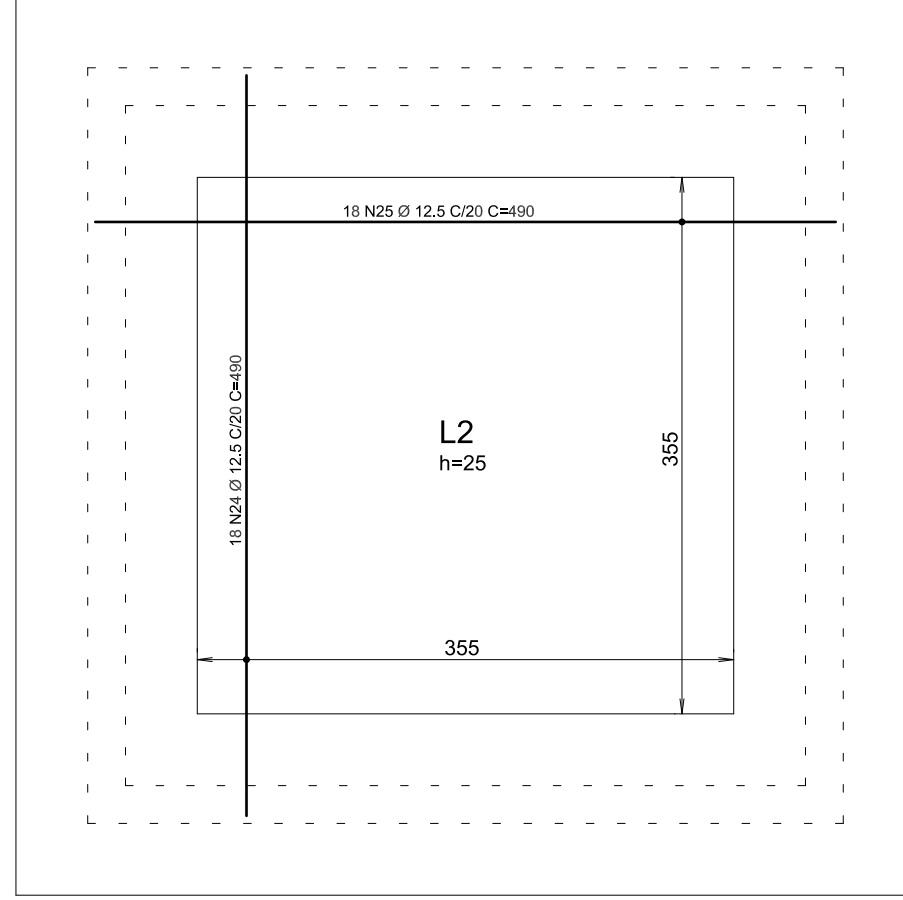
ARMADURA NEGATIVA FUNDOS
ESCALA 1/50



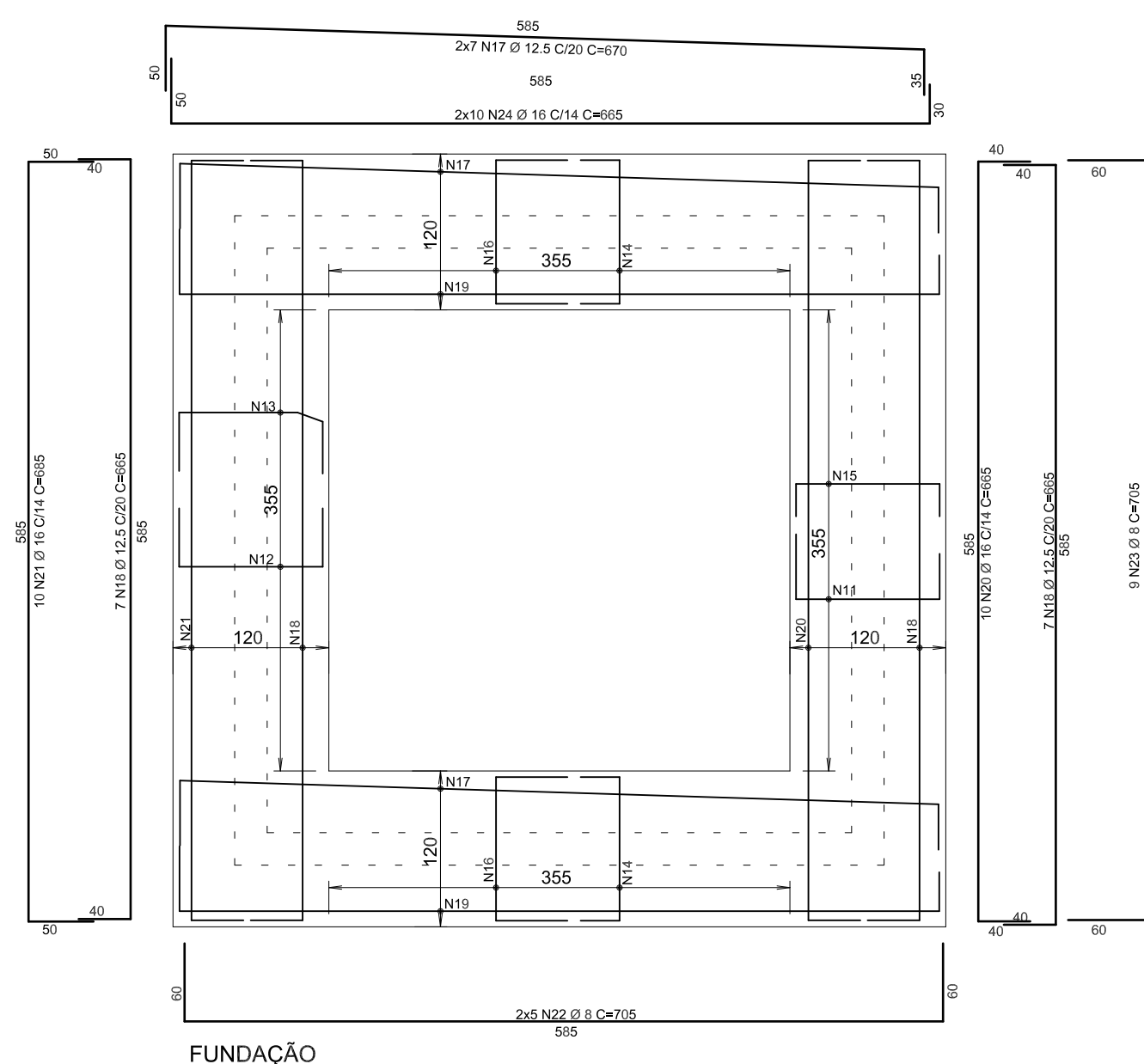
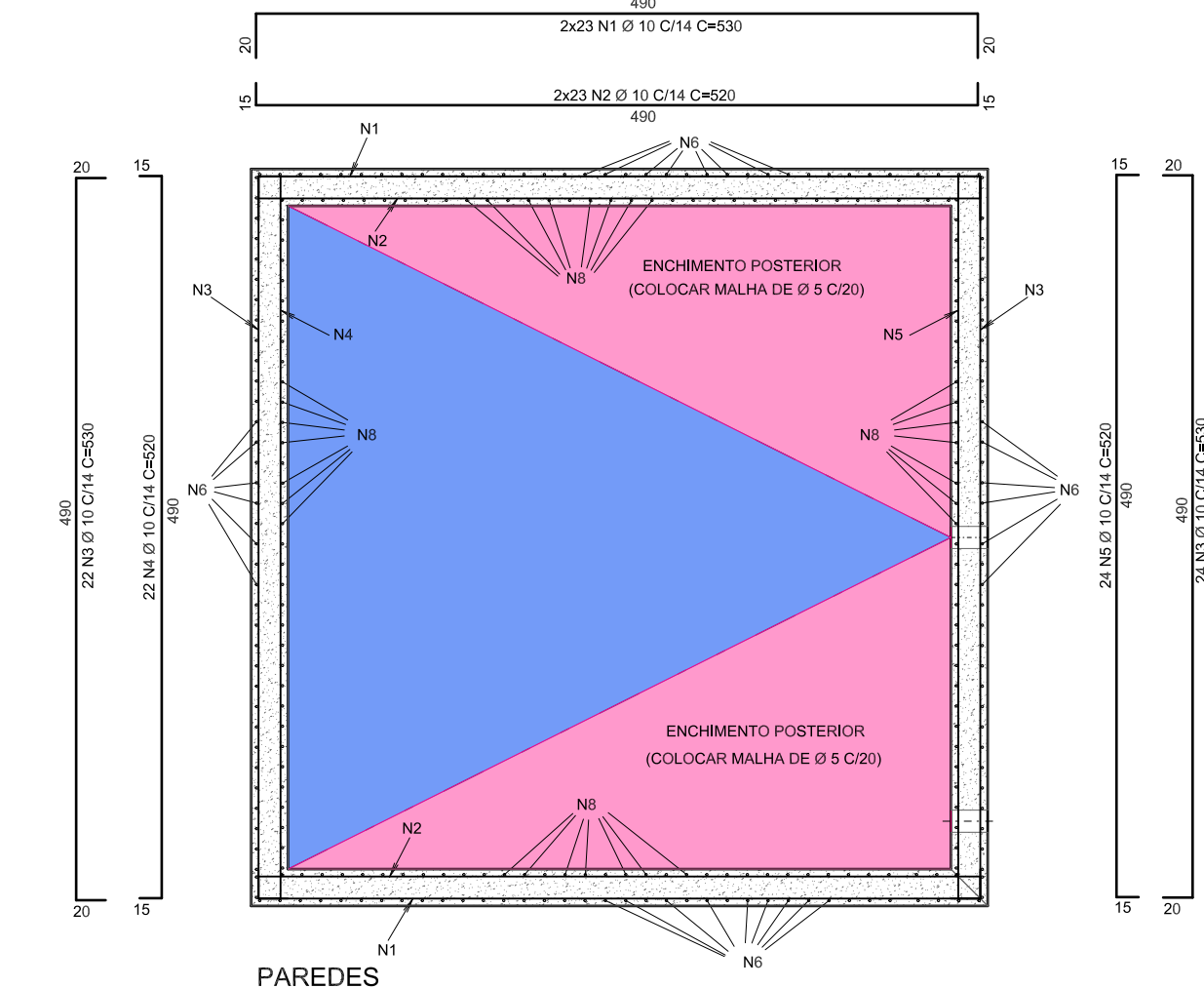
ARMADURA NEGATIVA VERTICAL
ESC.: 1/50



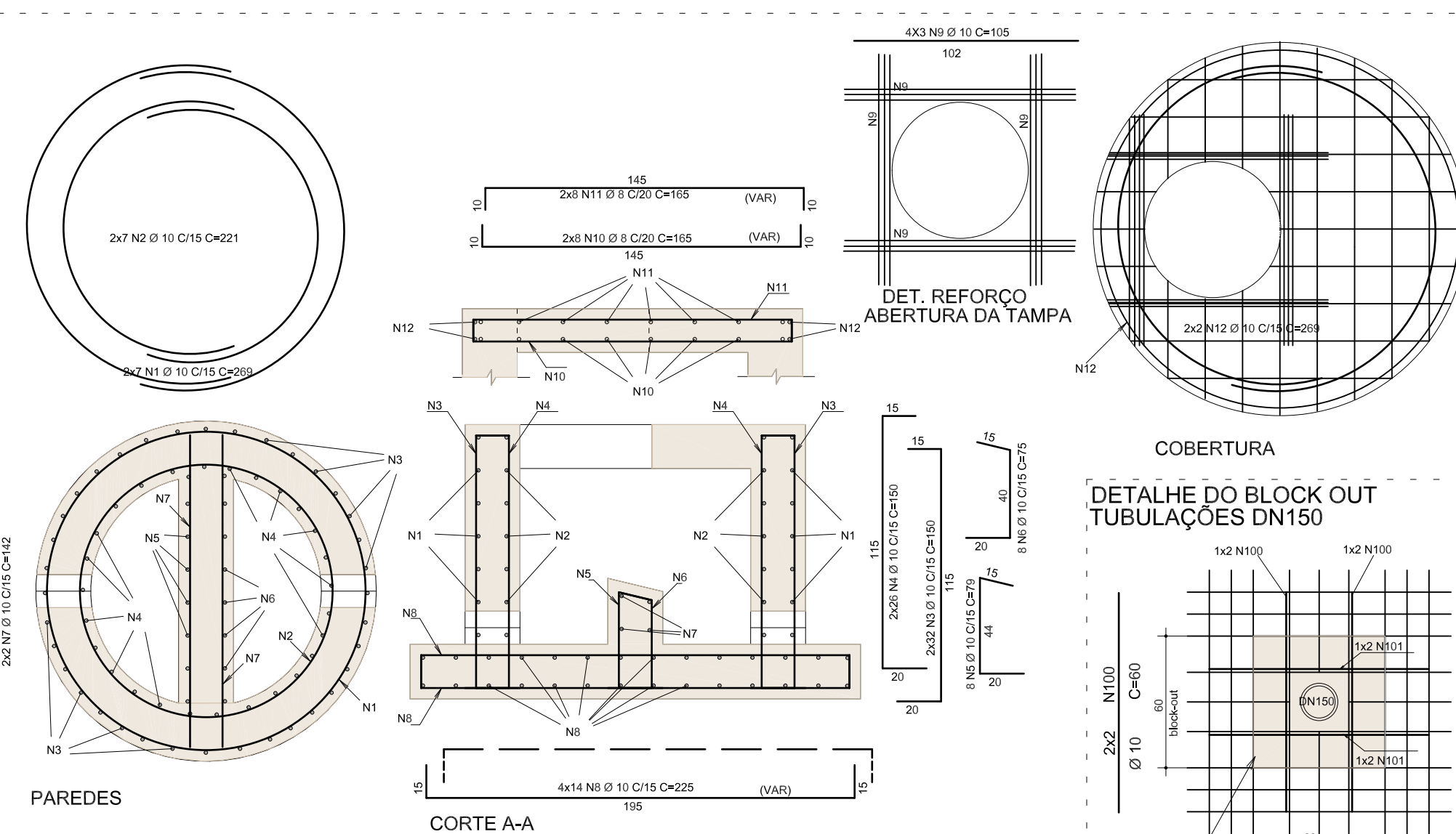
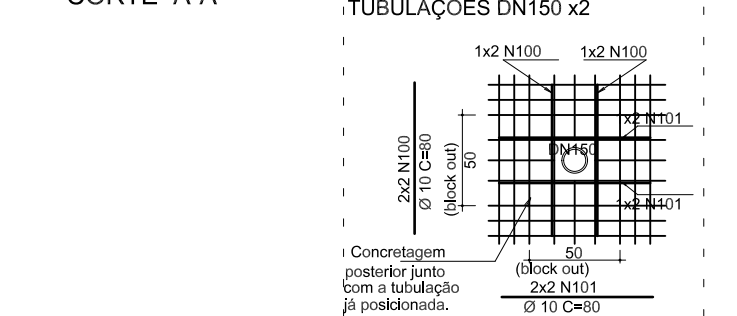
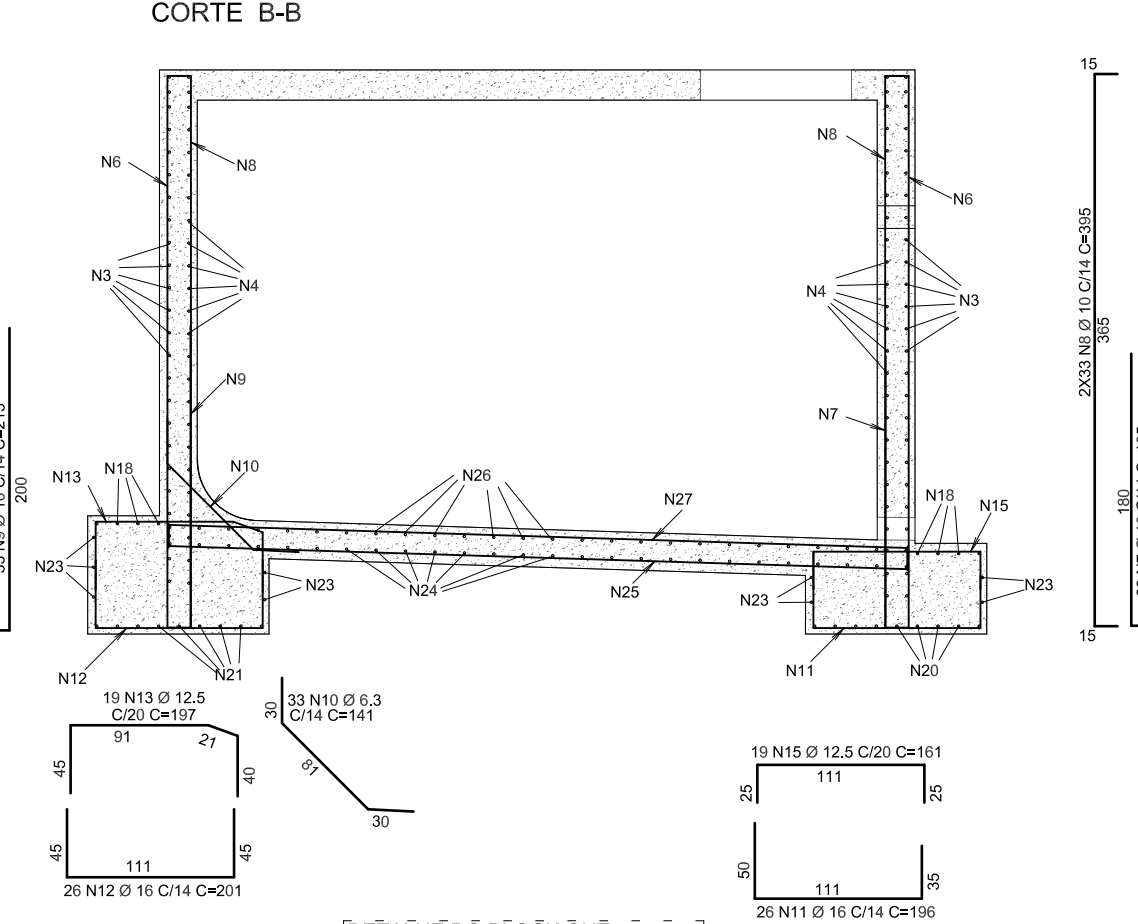
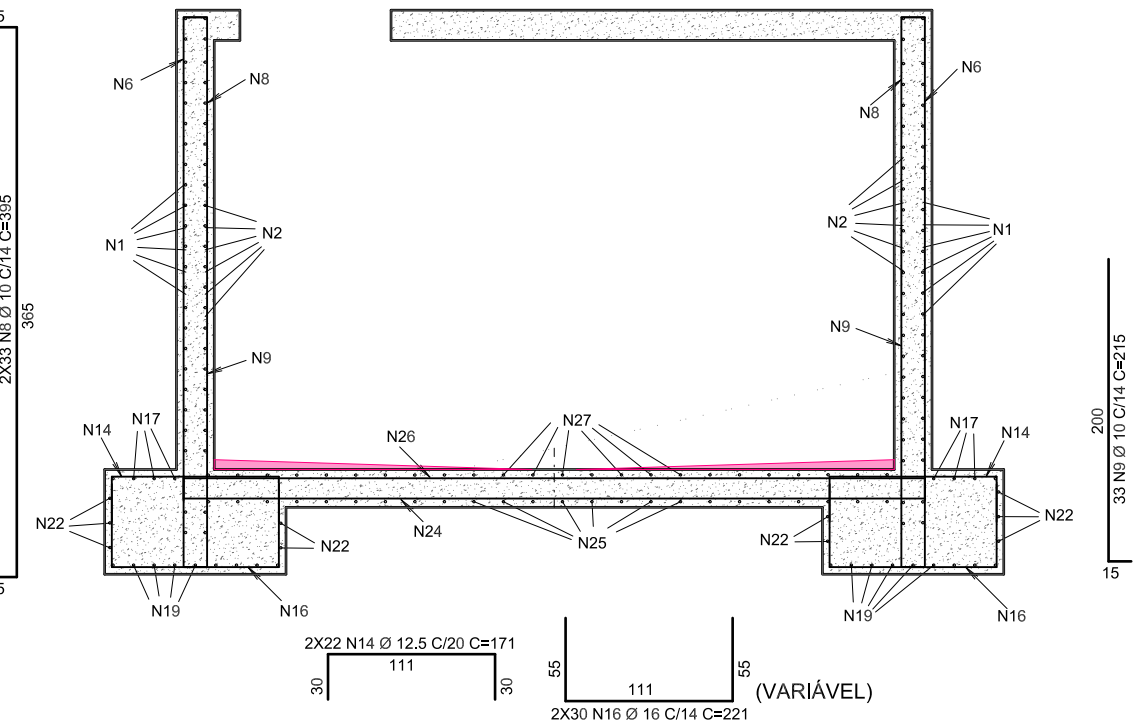
ARMADURA POSITIVA VERTICAL
ESC.: 1/50



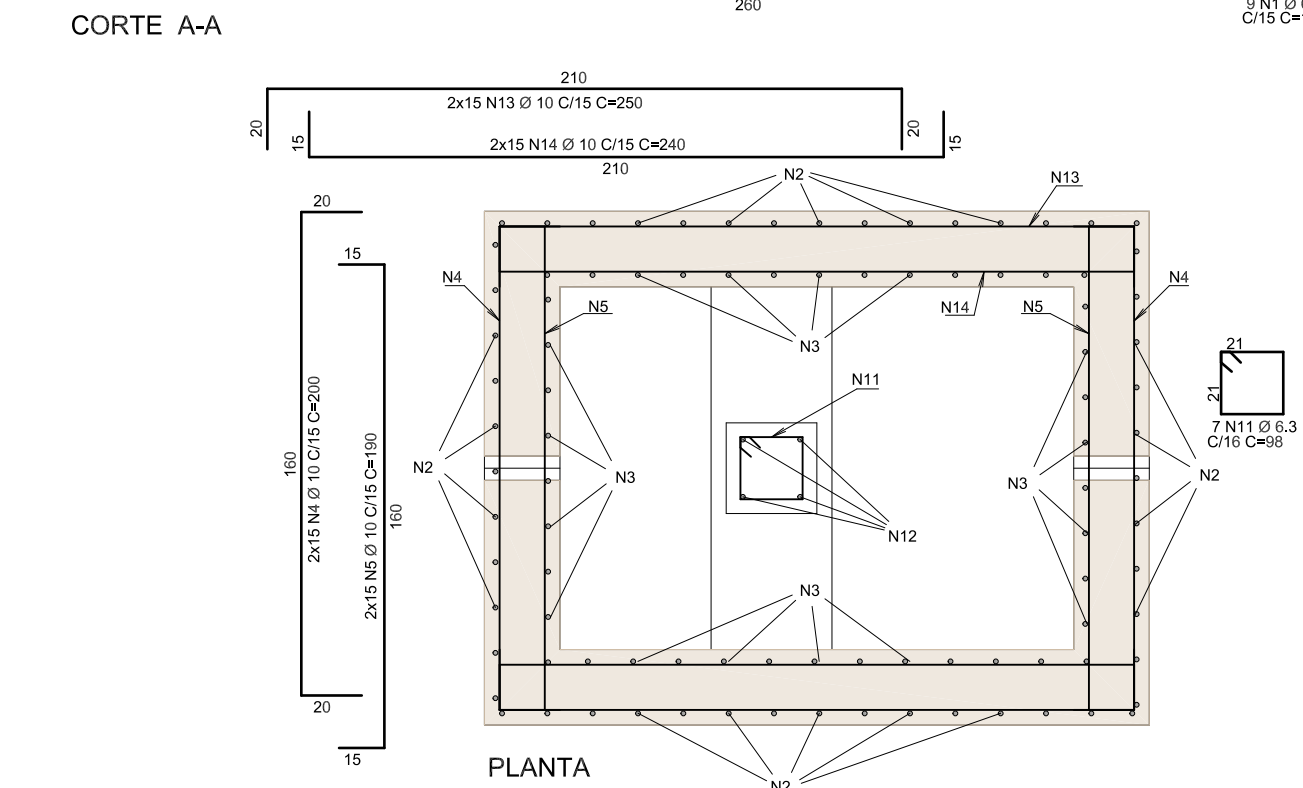
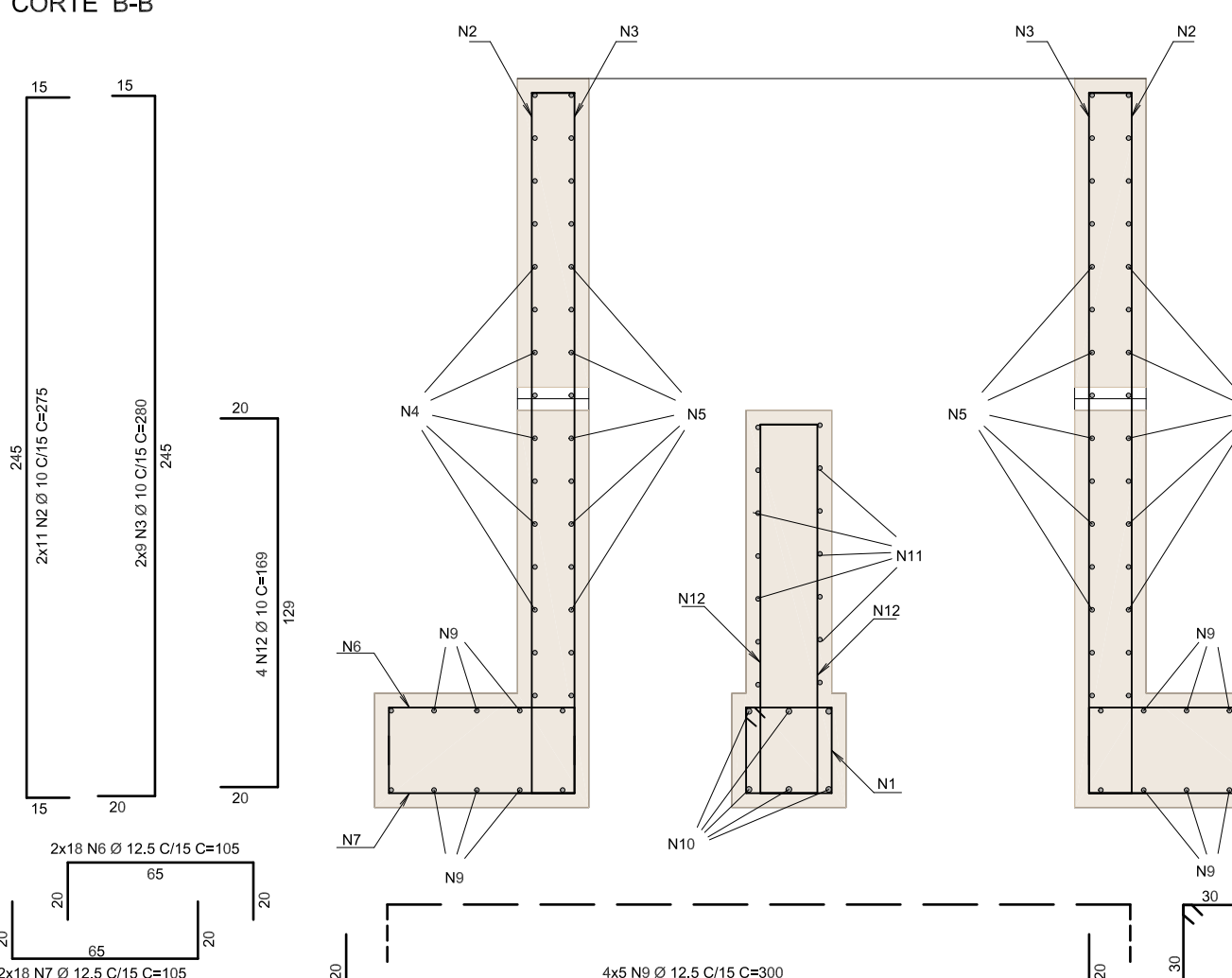
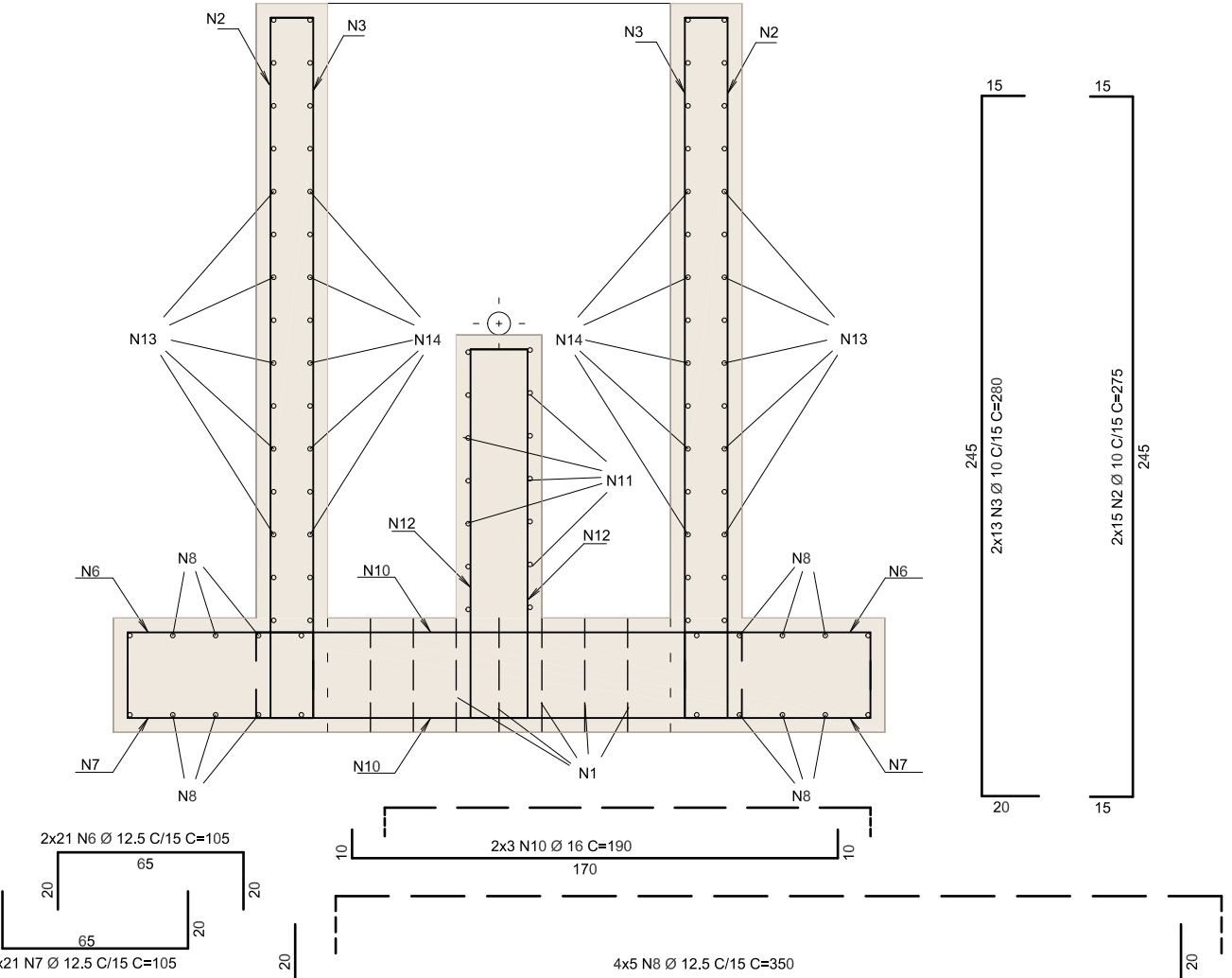
ARMADURA POSITIVA FUNDOS
ESCALA 1/50



DETALHAMENTO RESERVATÓRIO DE ACÚMULO
ESC.: 1/50



DETALHAMENTO PV DE TRANSIÇÃO
ESC.: 1/25



DETALHAMENTO MACROMEDIDOR
ESC.: 1/25

ACO	POS	BIT	QUANT	COMPRIMENTO	UNIT	TOTAL	ACO	POS	BIT	QUANT	COMPRIMENTO	UNIT	TOTAL
		(mm)		(cm)	(cm)	(cm)			(mm)		(cm)	(cm)	(cm)
ARM NEGATIVA HORIZONTAL							DET. PV DE TRANSIÇÃO						
50A	1	10	22	510	11220		50A	1	10	14	294	3768	
50A	2	10	9	52	468		50A	2	10	14	294	3768	
50A	4	10	16	368	5888		50A	3	10	64	1568	8500	
50A	5	10	5	52	468		50A	4	10	52	1568	7800	
ARM NEGATIVA VERTICAL							ARMADURA NEGATIVA FUNDOS						
50A	1	10	22	508	11176		50A	20	12,5	18	520	9360	
50A	2	10	18	366	6588		50A	27	12,5	18	520	9360	
50A	3	10	8	185	1480		DET. MACROMEDIDOR						
50A	4	10	18	50	900		50A	1	10	14	294	3768	
ARMADURA POSITIVA HORIZONTAL							50A	2	10	52	275	14300	
50A	1	10	22	510	11220		50A	3	10	44	280	12200	
50A	2	10	6	187	1122		50A	4	10	30	200	6000	
50A	3	10	5	52	468		50A	5	10	30	180	5700	
50A	4	10	18	368	6624		50A	6	12,5	78	105	8190	
ARMADURA POSITIVA VERTICAL							50A	7	12,5	78	105	8190	
50A	1	10	22	508	11176		50A	8	12,5	20	350	7000	
50A	2	10	18	366	6588		50A	9	10	20	300	6000	
50A	3	10	8	185	1480		50A	10	16	6	180	1140	
50A	4	10	18	367	6606		50A	11	6,3	7	88	696	
50A	5	10	10	90	900		50A	12	10	4	169	676	
ARMADURA POSITIVA FUNDOS							50A	13	10	30	250	7500	
50A	24	12,5	18	490	8820		50A	14	10	30	240	7200	
50A	25	12,5	18	490	8820		DET. PAREDES E FUNDAÇÃO RAC						
RESUMO AÇO CA 50-60							50A	1	10	48	530	24380	
ACO	BIT	COMPR	PESO				50A	2	10	46	520	23920	
50A	6,3	66	16				50A	3	10	46	530	24380	
50A	8	187	75				50A	4	10	22	520	11440	
50A	10	4089	2576				50A	5	10	24	520	12480	
50A	12,5	988	988				50A	6	10	144	395	56880	
50A	16	515	824				50A	7	10	33	185	6435	
Peso Total	50A =	4479 kg					50A	8	10	132	395	52140	
							50A	9	10	99	215	21285	
							50A	10	6,3	33	141	4653	
							50A	11	16	26	186	5098	
							50A	12	16	26	201	5226	
							50A	13	12,5	19	197	3743	
							50A	14	12,5	44	171	7534	
							50A	15	12,5	19	161	3069	
							50A	16	16	60	221	13260	
							50A	17	12,5	14	670	9380	
							50A	18	12,5	14	665	9310	
							50A	20	16	10	665	6650	
							50A	21	16	10	685	6850	
							50A	22	8	10	705	7050	
							50A	23	8	9	705	6345	
							50A	24	16	20	665	13300	
							50A	100	10	4	80	320	
							50A	101	10	4	80	320	

**DETALHE INTERFACE ESTRUTURA-TERRENO

