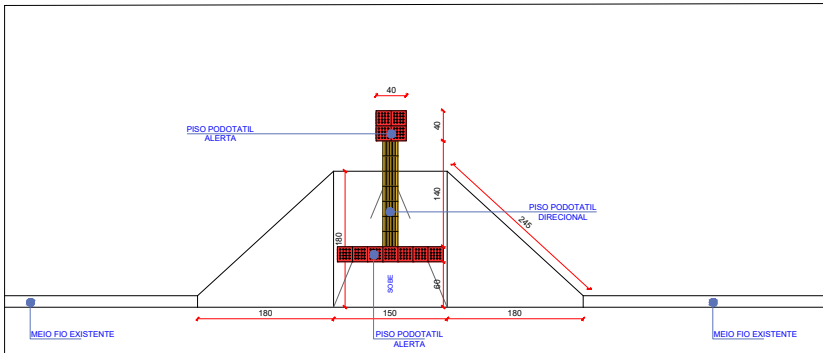
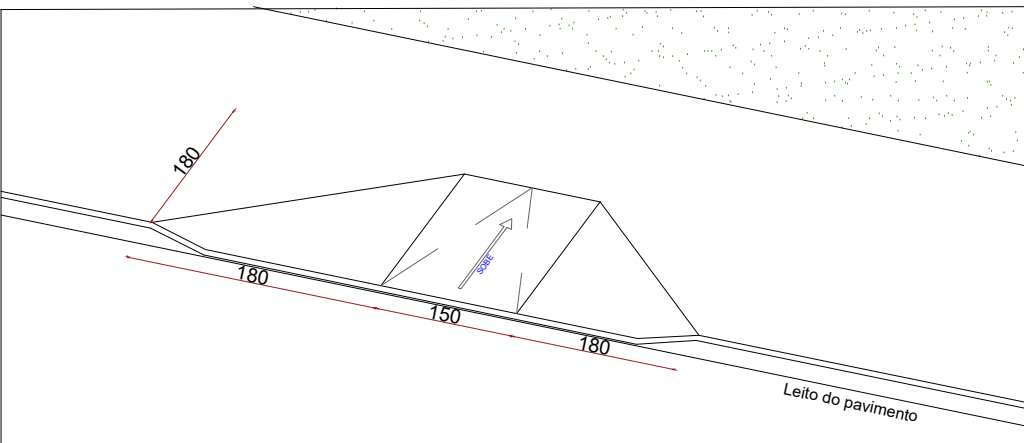


RAMPA PNE-01



PLANTA BAIXA

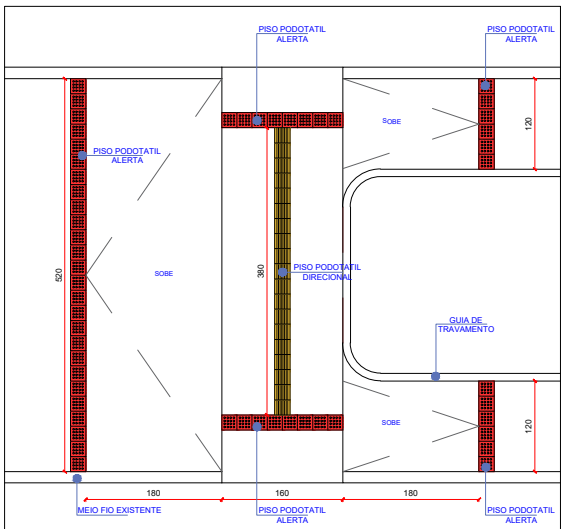
ESC: 1:100



ISOMÉTRICO

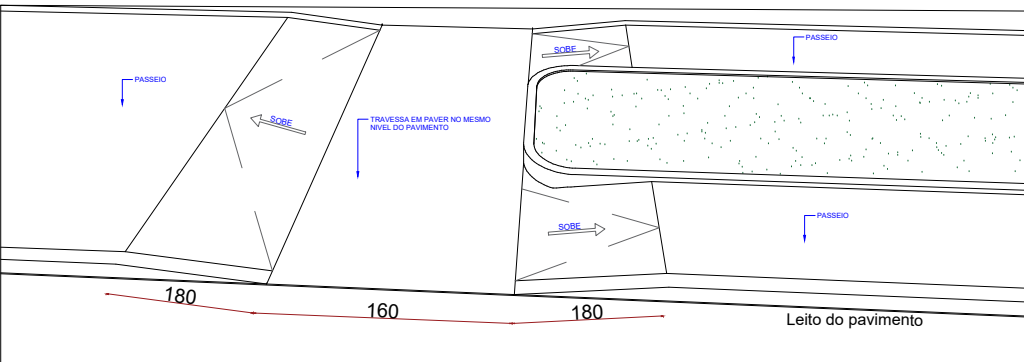
SEM ESC

RAMPA PNE-02



PLANTA BAIXA

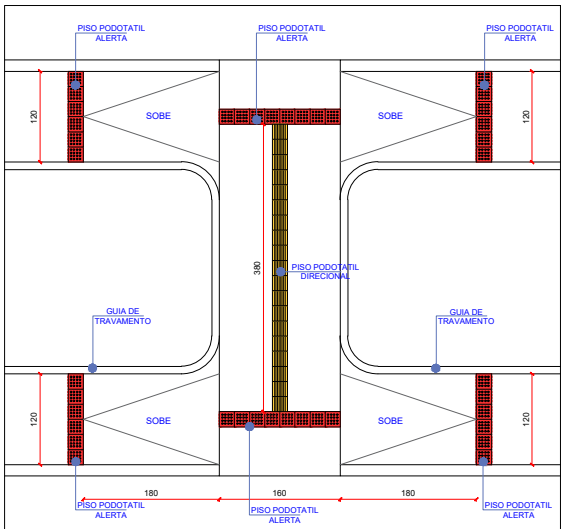
ESC: 1:100



ISOMÉTRICO

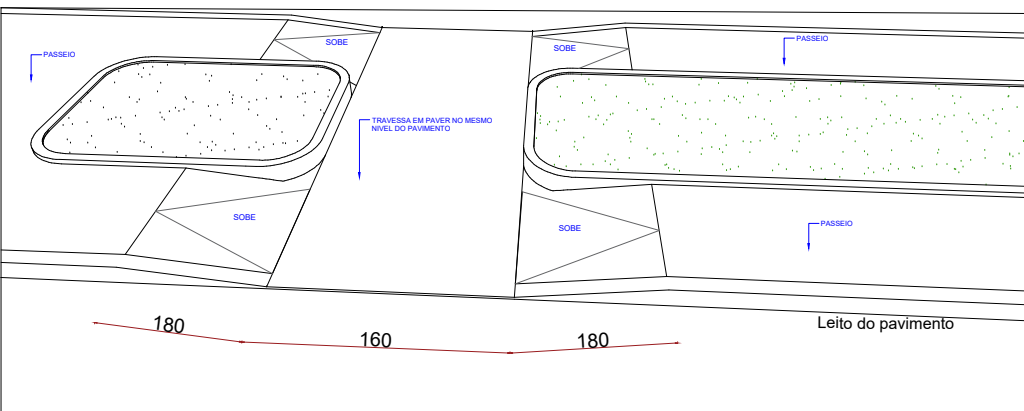
SEM ESC

RAMPA PNE-03



PLANTA BAIXA

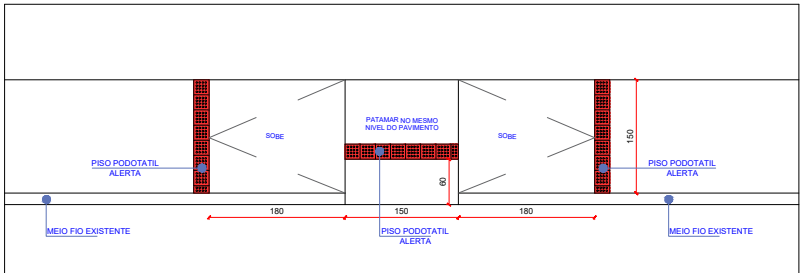
ESC: 1:100



ISOMÉTRICO

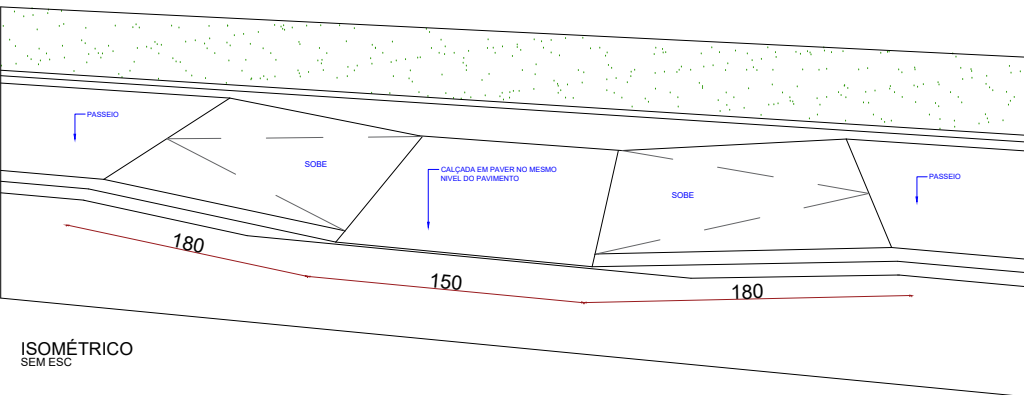
SEM ESC

RAMPA PNE-04



PLANTA BAIXA

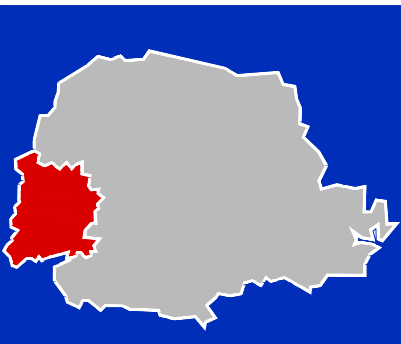
ESC: 1:100



ISOMÉTRICO

SEM ESC

ÓRGÃOS PÚBLICOS:



AMOP
ASSOCIAÇÃO DOS MUNICÍPIOS DO
OESTE DO PARANÁ

A R Q U I T E T Ô N I C O

REFERÊNCIA:

DETALHES RAMPAS

OBRA: CALÇAMETO CANTEIRO E PRAÇA CENTRAL

LOCAL: SÃO JOSÉ DAS PALMEIRAS - PR

PROPR.: MUNICIPIO DE SÃO JOSÉ DAS PALMEIRAS

PRANCHA:

11
/ 13

PROJETO:

BRUNO M. MATTEI
Arquiteto e Urbanista
CAU-PR A73.384-2

RESP. OBRA:

SITUAÇÃO:

PROPRIETÁRIO:

PREFEITURA DE SÃO JOSÉ DAS PALMEIRAS
CNPJ: 778196050001-33

ESTATÍSTICAS:

ÁREA :
RAMPA 01: 6,21 m²
RAMPA 02: 22,58 m²
RAMPA 03: 17,65 m²
RAMPA 04: 7,90 m²

DATA:

JAN/2022

ESCALA:

INDICADA

DESENHO:

BRUNO MATTEI